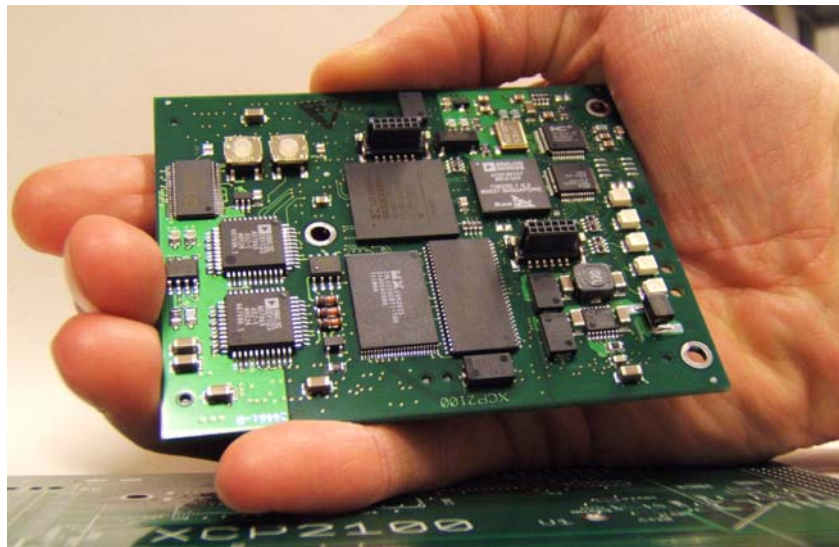


Compact Control System

XCS 2100 / XCP 2100

For Highly Integrated Converter Control

With the XCS 2100 / XCP 2100 we developed a new generation of control systems with compact size and low cost for industrial applications. The core component is the XCP 2100 control module with a high performance 500 MHz clocked Blackfin® DSP from Analog Devices and a Spartan 3 FPGA from Xilinx. This module is ideally suited to be designed directly into a power converter. In applications where a centralized control in a robust case on a DIN-rail is needed the XCS 2100 control system is the right choice.



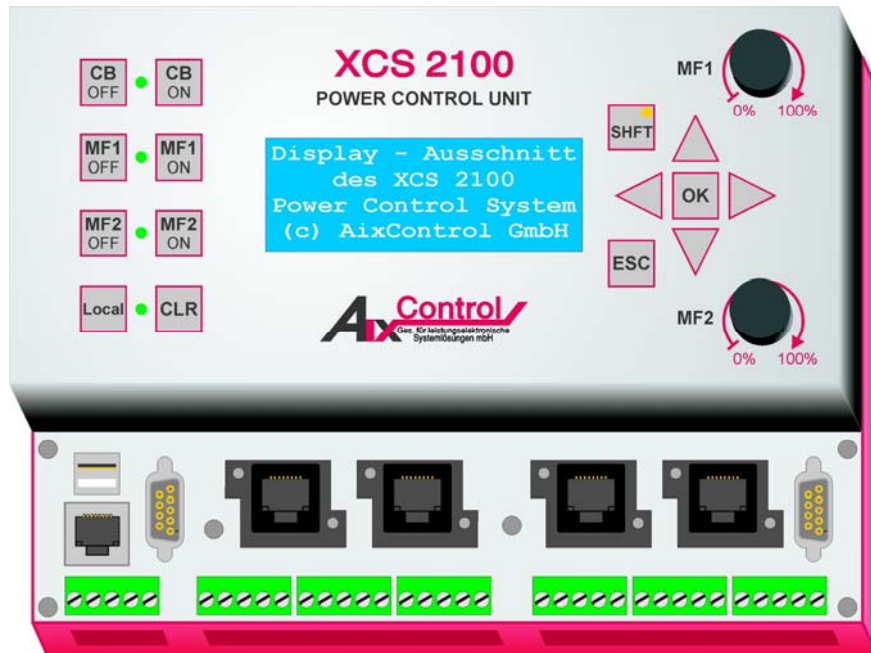
XCP 2100 Control Module

This very compact and powerful module is based on a 500 MHz fixed-point DSP with a large number of interfaces. A FPGA with 400.000 gates is used to implement all power control specific interfaces (e.g. PWM, incremental encoder...) and to allow a high amount of flexibility. 4 high-density board-to-board connectors allow the XCP 2100 to be plugged on a main board. These are the key features of the control module:

- ◆ 85 mm x 70 mm size
- ◆ Industrial temperature range
- ◆ 500 MHz Blackfin® DSP
- ◆ 400.000 Gates FPGA
- ◆ 32Mbytes SDRAM, 4 Mbytes Flash
- ◆ 8 channels 14 Bit AD-Converter w/ synchronous sampling
- ◆ 4 channels 12 Bit DA-Converter
- ◆ 10/100MBit-Ethernet, CAN-Bus, RS232, Compact Flash, SPI-Port, TWI, USB1.1, SPORT

Simple Programming of Control and Communication Tasks

The use of the AixOS operating system simplifies development of control and communication tasks. It has been designed to minimize software development time. With the device drivers for all common interfaces the user can comfortably program communication routines.



XCS 2100 Control System

Based on the XCP 2100 control module the new XCS 2100 system is a DIN-rail mountable control in a metal case. The front consists of a very robust membrane keypad, a 4 row character display and two rotary knobs. A number of connectors are used to interface with the actual converter and can easily be adapted to user applications. Connectors on each side allow adding interfaces and control boxes to a customized control system.

This system is still in the development and will be available approximately in 1Q/2007.

Customized System

The XCS 2100 control system can be customized e.g. by a new printing or completely new design of the membrane keypad. All front interface connectors can be changed in a wide range without constructing a new metal case. We offer development of complete control software and system for your individual applications.

Don't hesitate to contact us.

Contact: Dr. Jochen von Bloh
Address: AixControl GmbH
Jaegerstraße 17/19
52066 Aachen
Germany

Phone: +49-241-80 969 64
Fax: +49-241-80 922 03
E-mail: info@aixcontrol.de
Web: <http://www.AixControl.de/>